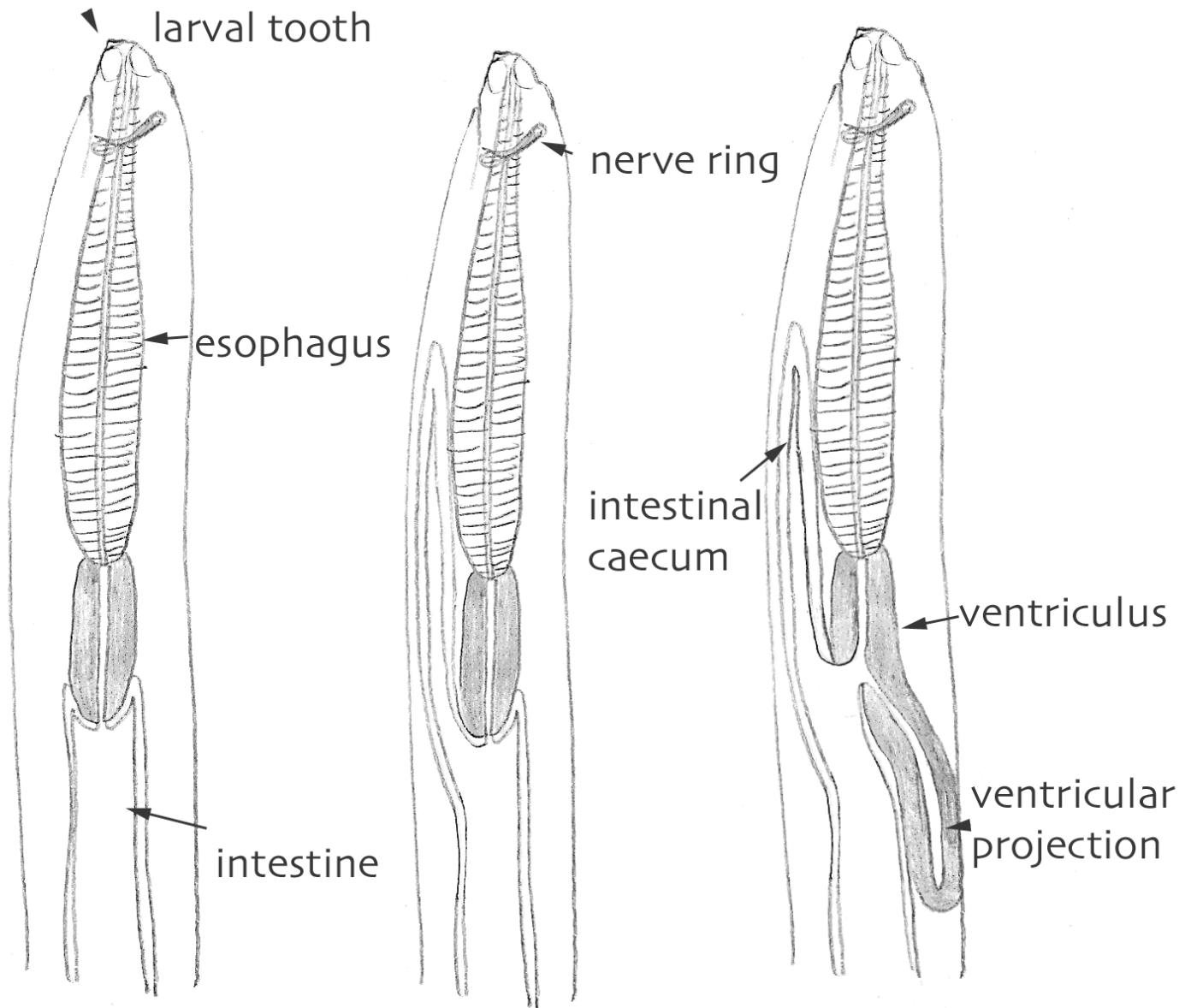


# Anisakidae

fixatives: glacial acetic acid, AFA (85ml 85% ethanol, 10ml formalin, 5ml glacial acetic acid)

storage: alcohol-glycerol = 9 parts 70% ethanol, 1 part glycerol

clearing: glacial acetic acid, glycerol, xylene, 90% lactic acid, lacophenol



*Anisakis simplex*  
*senso lato*

*Pseudoterranova decipiens*  
*senso lato*

*Contracaecum osculatum*  
*senso lato*

*Phoscalearis cystophorae*  
*senso lato*

L3 small white worms  
9-38mm  
bright blush-white  
fluorescence

L3 redish-brown  
9-58mm  
bright blush-white  
fluorescence

L3 greenish brown  
7-30mm  
yellow  
fluorescence